



Coimisiún na Scrúduithe Stáit
State Examinations Commission

Leaving Certificate Examination 2023

Geography

Part One and Answerbook

Higher Level

Friday 9 June Morning 9:30 - 12:20

400 marks

Examination Number

<input type="text"/>	<input type="text"/>	<input type="text"/>	<input type="text"/>	<input type="text"/>	<input type="text"/>
----------------------	----------------------	----------------------	----------------------	----------------------	----------------------

Day and Month of Birth

<input type="text"/>	<input type="text"/>	<input type="text"/>	<input type="text"/>
----------------------	----------------------	----------------------	----------------------

For example, 3rd February
is entered as 0302

Centre Stamp

--

Instructions

Write your Examination Number and your Day and Month of Birth in the boxes on the front cover.

Write your answers to all parts of the examination into this answerbook. This answerbook will be scanned and your work will be presented to an examiner on screen. Anything that you write outside of the answer areas may not be seen by the examiner.

Write your answers in blue or black pen. You may use pencil for sketches, graphs and diagrams only.

There are two parts to this examination. Questions for **PART TWO** are supplied separately but your answers must be written in this answerbook.

PART ONE Short-Answer Questions **80 marks**

Attempt any **TEN** questions.

All questions carry equal marks.

PART TWO Structured and Essay Questions **320 marks**

You must attempt **FOUR** questions. This must include one question from three of the sections below:

- Section 1: **Patterns and Processes in the Physical Environment** (Questions 1-3)
- Section 2: **Regional Geography** (Questions 4-6)
- Section 3: **Electives** (Questions 7-12)
- Section 4: **Options** (Questions 13-24)

The fourth question can be from any section.

All questions carry equal marks.

PART ONE – SHORT-ANSWER QUESTIONS – 80 MARKS

Attempt any **TEN** questions.

All questions carry equal marks.

THESE QUESTIONS ARE TO BE ANSWERED IN THE SPACES PROVIDED

1. Landscape Identification

Examine the 1:50 000 Ordnance Survey map and legend accompanying this paper.

- (i) In the table below, match each of the following landscape features with the grid reference that best matches its location on the Ordnance Survey map:

- Drumlin
- Concave slope
- Confluence.

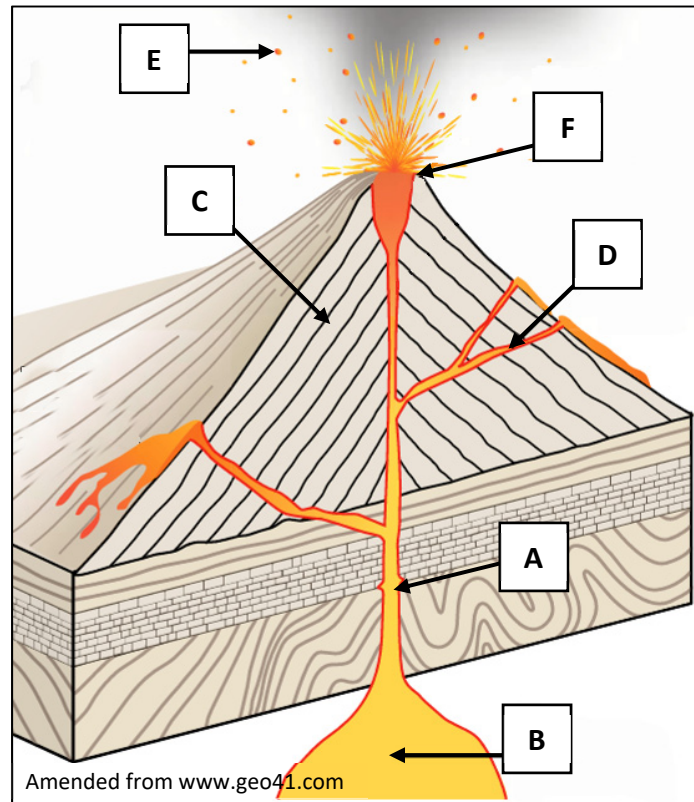
Grid Reference	Feature
H 50 05	
H 39 01	
H 45 01	

- (ii) Name **two** lakes found on the map that are north of Northing 03.

1.
2.

[8m]

2. Volcanic Activity



Examine the diagram of an erupting volcano above and answer each of the following questions.

- (i) Match each of the letters **A, B, C, D, E** and **F** with the term that best matches it in the table below.

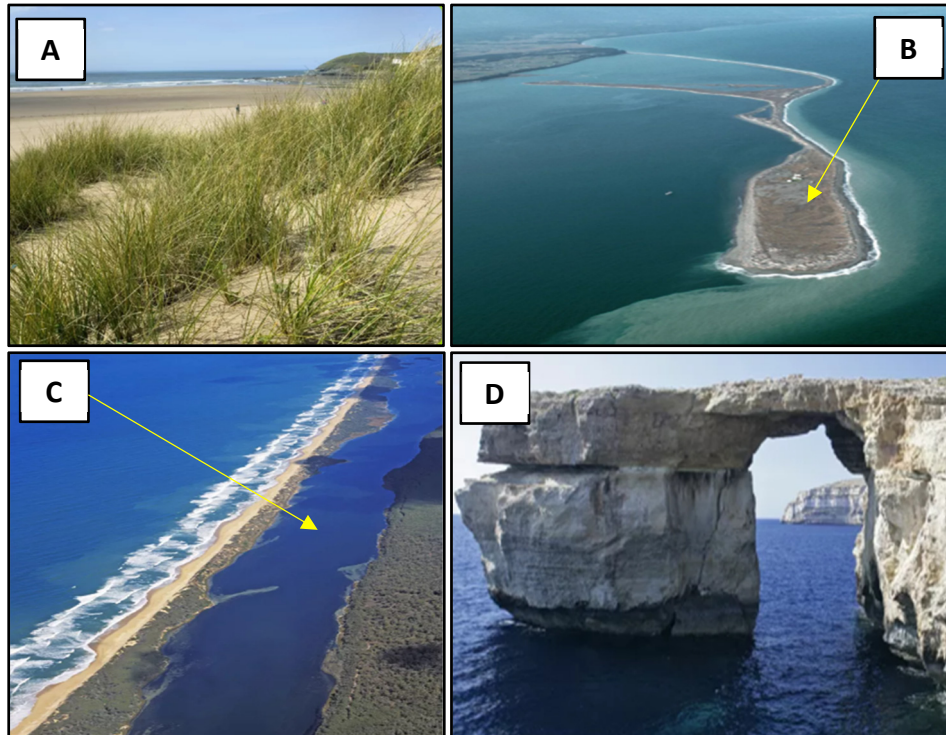
Term	Letter
Layers of lava and volcanic ash	
Crater	
Secondary vent	
Magma chamber	
Main vent	
Volcanic bomb	

- (ii) Name **two** plutonic features that form when magma cools.

1.
2.

[8m]

3. Coastal Landscape



Amended from www.dkfindout.com

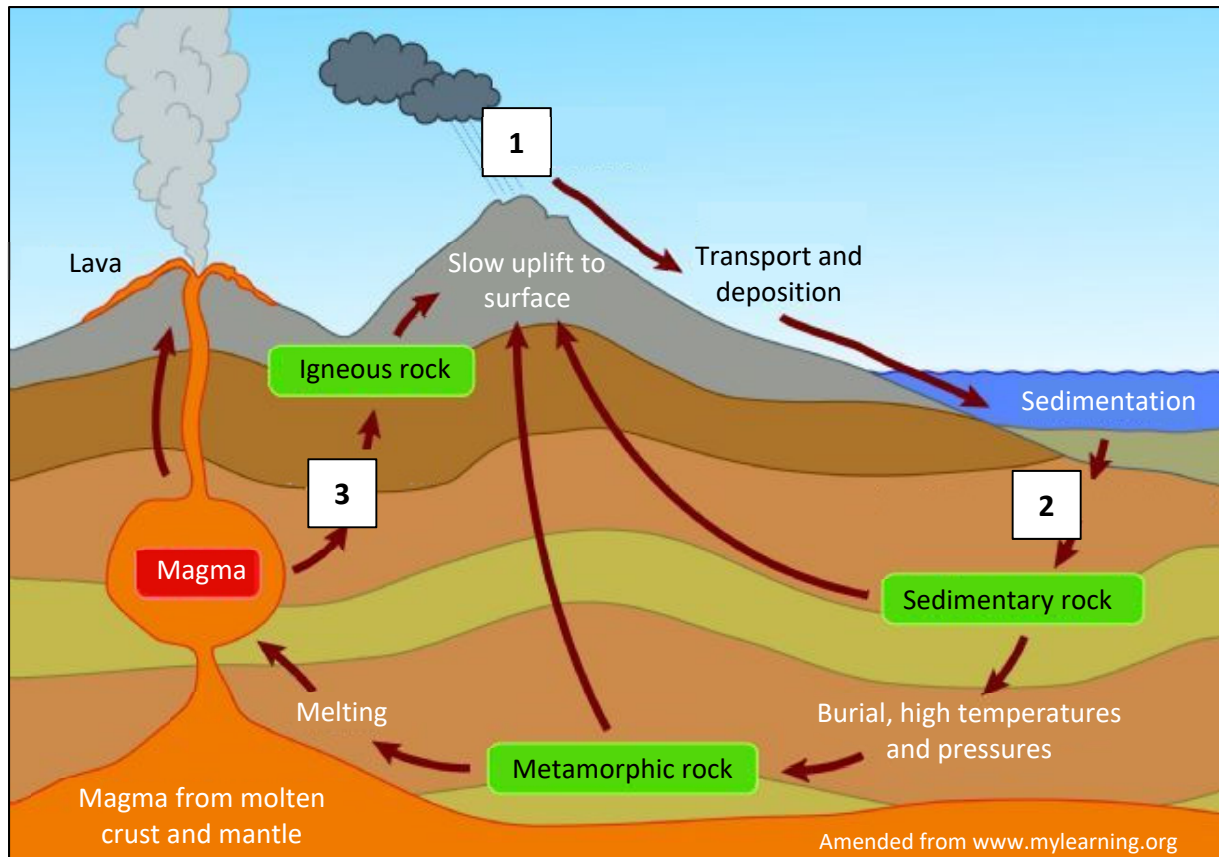
Examine the photographs above and answer each of the following questions.

- (i) Match each of the photographs **A**, **B**, **C** and **D** with the feature that best matches it in the table below.
- (ii) Indicate, by ticking the correct box, whether each of the features in the table below, is most associated with processes of erosion or the process of deposition.

Q.3(i)	Feature	Q.3(ii)	
		Processes of Erosion (✓)	Process of Deposition (✓)
	Lagoon		
	Sand dunes		
	Sea arch		
	Sand spit		

[8m]

4. Rocks



Examine the diagram of the rock cycle above and answer each of the following questions.

- (i) Match each of the numbers on the diagram with the process that best matches it in the table below.

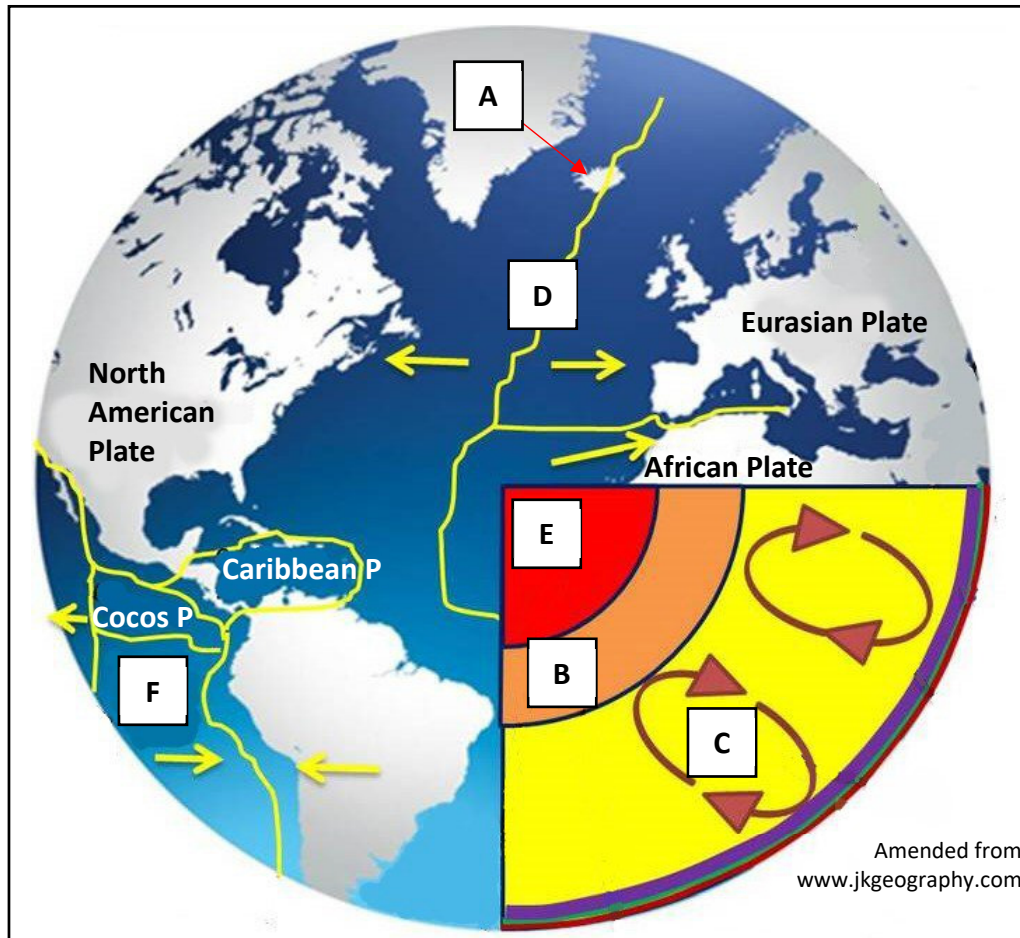
Process	Number
Crystallisation of magma	
Weathering and erosion	
Compaction and cementation	

- (ii) Name **one** example of a sedimentary rock **and one** example of a metamorphic rock.

Sedimentary rock:
Metamorphic rock:

[8m]

5. Plate Tectonics



Examine the diagram of the earth above and answer each of the following questions.

- (i) Match each of the letters **A, B, C, D, E** and **F** with the term that best matches it in the table below.

Term	Letter
Convection currents	
Inner core	
Outer core	
Nazca plate	
Volcanic island	
Divergent plate boundary	

- (ii) What is the name for the solid layer of rock around the earth which consists of the upper mantle and the crust?

[8m]

6. Concept of a Region

- (i) Complete the table below by matching each of the examples of regions in the list, with the type of region most associated with it in the table.

Examples of Regions:

West of Ireland

North European Plain

Cool Temperate Oceanic region

London

Sambre Meuse Valley

County Meath

Type of Region	Example of Region
Urban region	
Peripheral region	
Climatic region	
Geomorphological region	
Administrative region	
Region of industrial decline	

- (ii) Indicate whether each of the following statements is true or false by ticking (✓) the correct box.

- (a) Core regions are usually well-developed socio-economic regions that attract industry.

True ☐

False ☐

- (b) Peripheral regions experience net immigration.

True ☐

False ☐

[8m]

7. Map Skills

Examine the 1:50 000 Ordnance Survey map and legend accompanying this paper, and answer each of the following questions.

- (i) What is the height (in metres) at the triangulation pillar at H 462 008?

- (ii) Measure the straight-line distance (in kilometres) from the centre of the roundabout at H 423 019 to the centre of the roundabout at H 435 041.

- (iii) Give a six-figure grid reference for the exact point where the N3 exits the map in the southeast.

- (iv) Calculate the area (in km²) of the map extract which is north of Northing 00.

[8m]

8. Aerial Photograph and Ordnance Survey Map

Examine the aerial photograph of Cavan and the 1:50 000 Ordnance Survey map and legend accompanying this paper and answer each of the following questions.

- (i) In what direction was the camera pointed when the aerial photograph was taken?

- (ii) Give a four-figure grid reference for the lake that is located in the right foreground of the aerial photograph.

- (iii) Which of the following regional roads can be seen in the left background of the aerial photograph? Tick (✓) the correct box.

R 212 ☐

R 188 ☐

R 198 ☐

R 165 ☐

- (iv) State the **type** of aerial photography used for the aerial photograph accompanying this paper.

[8m]

9. Aerial Photograph

Examine the aerial photograph of Cavan accompanying this paper and the Google Street View images below from the same area of Cavan.



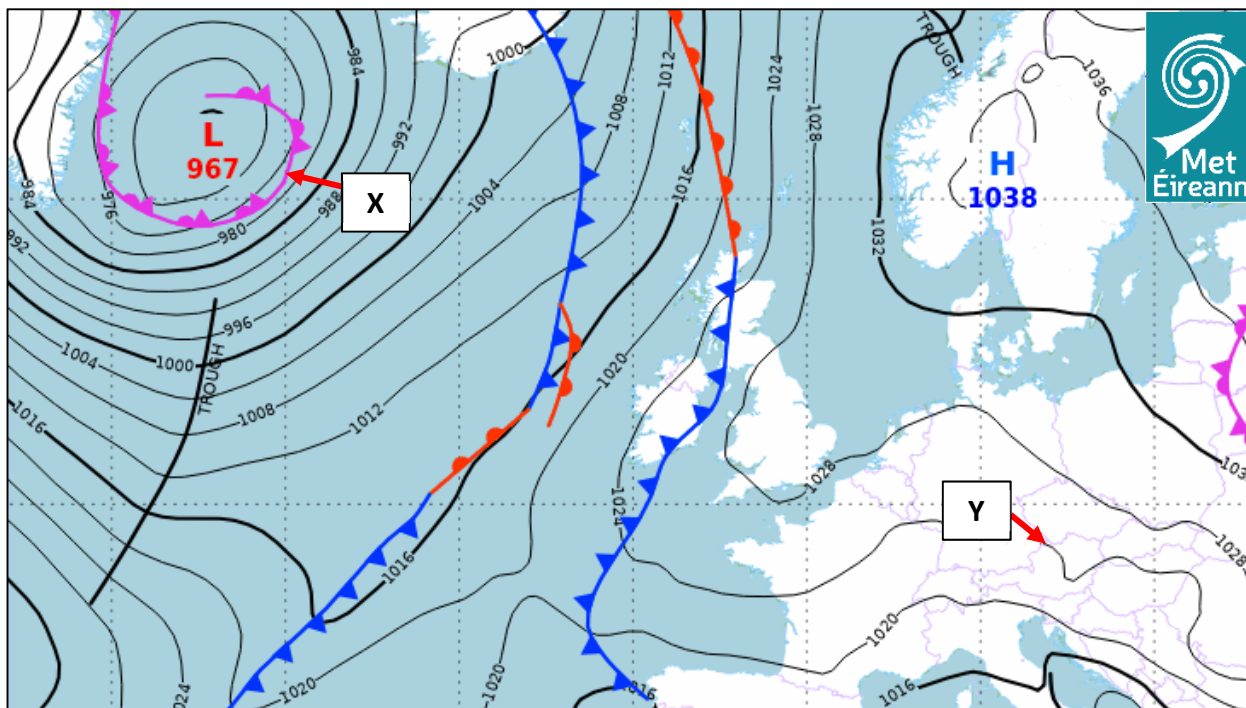
Amended from Google Streetview

Using accepted notation, give the location on the aerial photograph of each of the areas shown in the images **A**, **B**, **C** and **D**, in the table below.

Google Street View Image	Location on the Aerial Photograph
A	
B	
C	
D	

[8m]

10. Weather



Examine the weather chart above from Met Éireann and answer each of the following questions.

- (i) Which of the following types of front is labelled **X** on the weather chart above?
Tick (✓) the correct box.

Warm front ☐
Cold front ☐
Occluded front ☐

- (ii) What is the barometric pressure (in hectopascals/millibars) at **Y** on the weather chart?

- (iii) Indicate whether the following statement is true or false by ticking (✓) the correct box.
Winds over the area marked **X** are stronger than the winds over the area marked **Y**.

True ☐
False ☐

- (iv) What is the term used to describe the wind that blows most frequently over an area?

[8m]

11. Statistical Interpretation

Towns with the Highest Percentage of Daily Irish Speakers, 2016

Town	County	% Daily Irish Speakers	Number of Daily Irish Speakers	Total Number of People
Mín Lárach	Donegal	73	X	400
Rann na Feirste	Donegal	67	202	302
An Cheathrú Rua	Galway	62	467	753
Bun na Leaca	Donegal	58	223	385
An Bun Beag-Doirí Beaga	Donegal	53	766	1,445

Amended from CSO

Examine the table above showing information on towns with the highest percentage of daily Irish speakers and answer each of the following questions.

- (i) Which town from the table above is in Co. Galway?

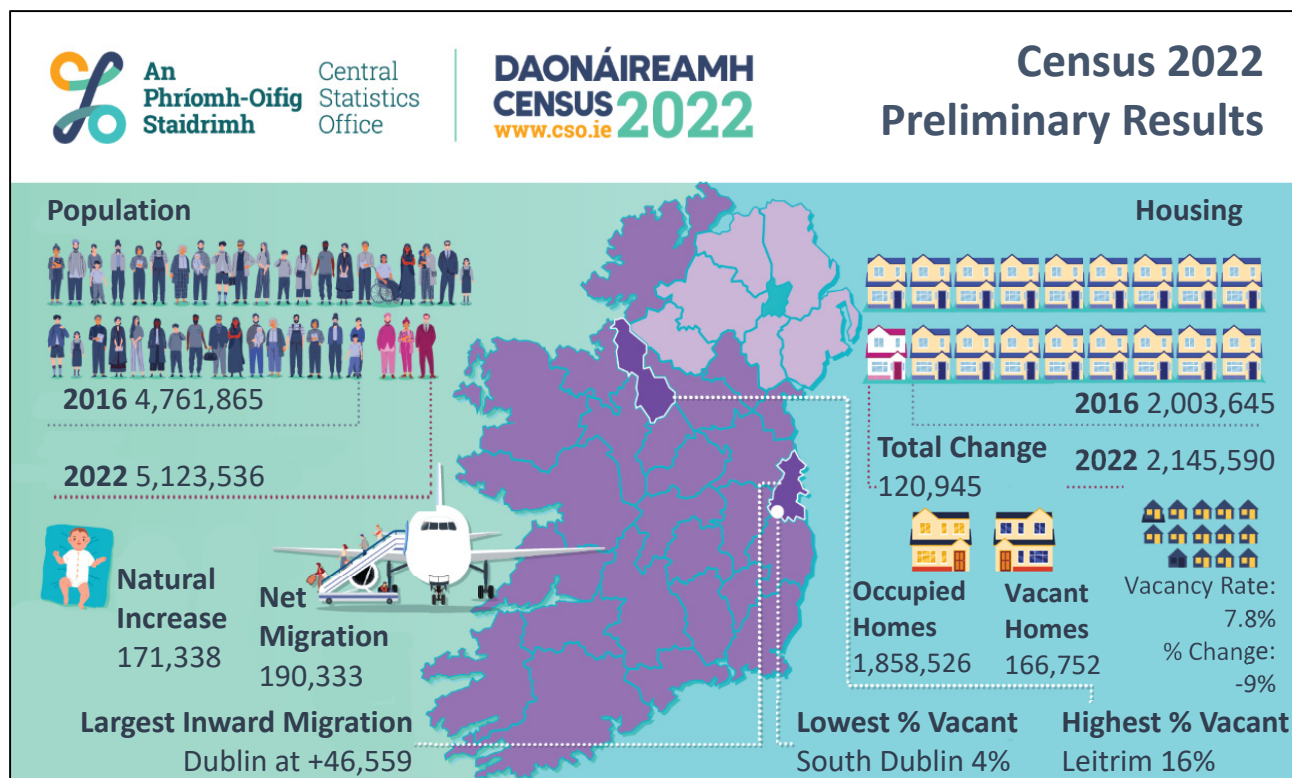
- (ii) What was the percentage of daily Irish speakers in An Bun Beag-Doirí Beaga?

- (iii) Which town from the table above had the lowest number of people in 2016?

- (iv) Calculate X the number of people living in Mín Lárach in 2016 who were daily Irish speakers.

[8m]

12. Graphical Interpretation



Examine the infographic above on preliminary results of Census 2022 and answer each of the following questions.

- (i) How many homes in Ireland were vacant in 2022?

- (ii) Which county had the largest inward migration in 2022?

- (iii) By how many people did the population of Ireland increase between 2016 and 2022?

- (iv) State **two** ways that census data can be used by governments.

1.
2.

[8m]

Answerbook for PART TWO

Instructions

Questions for **PART TWO** are supplied separately.

Start each question on a new page. Write the question number in the box at the top of each page.

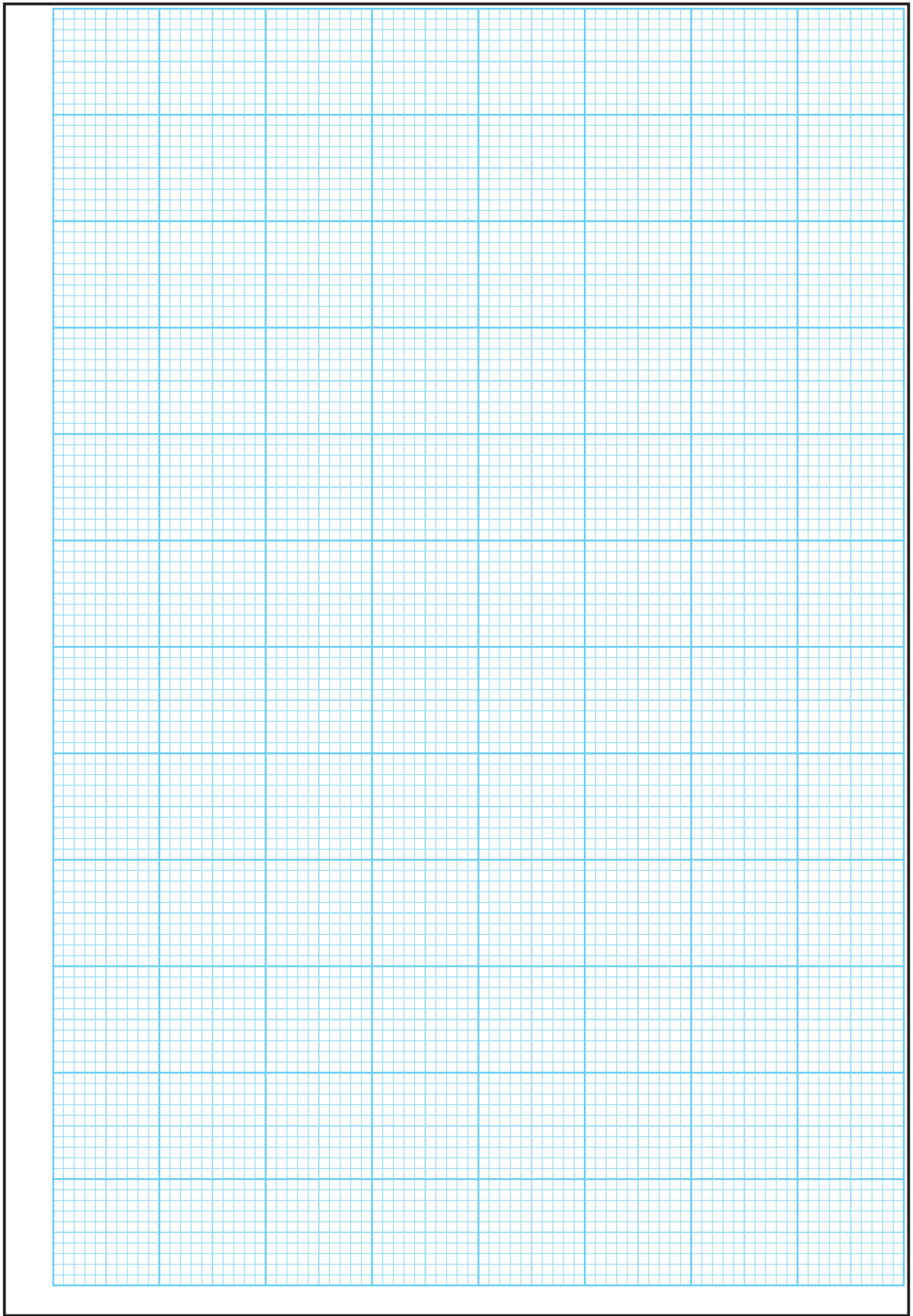
Use the left-hand column to label each part, as shown below.

Question		<div>0</div> <div>4</div>	Start each question on a new page
Part			
(a)			
(b)(i)			
(b)(ii)			

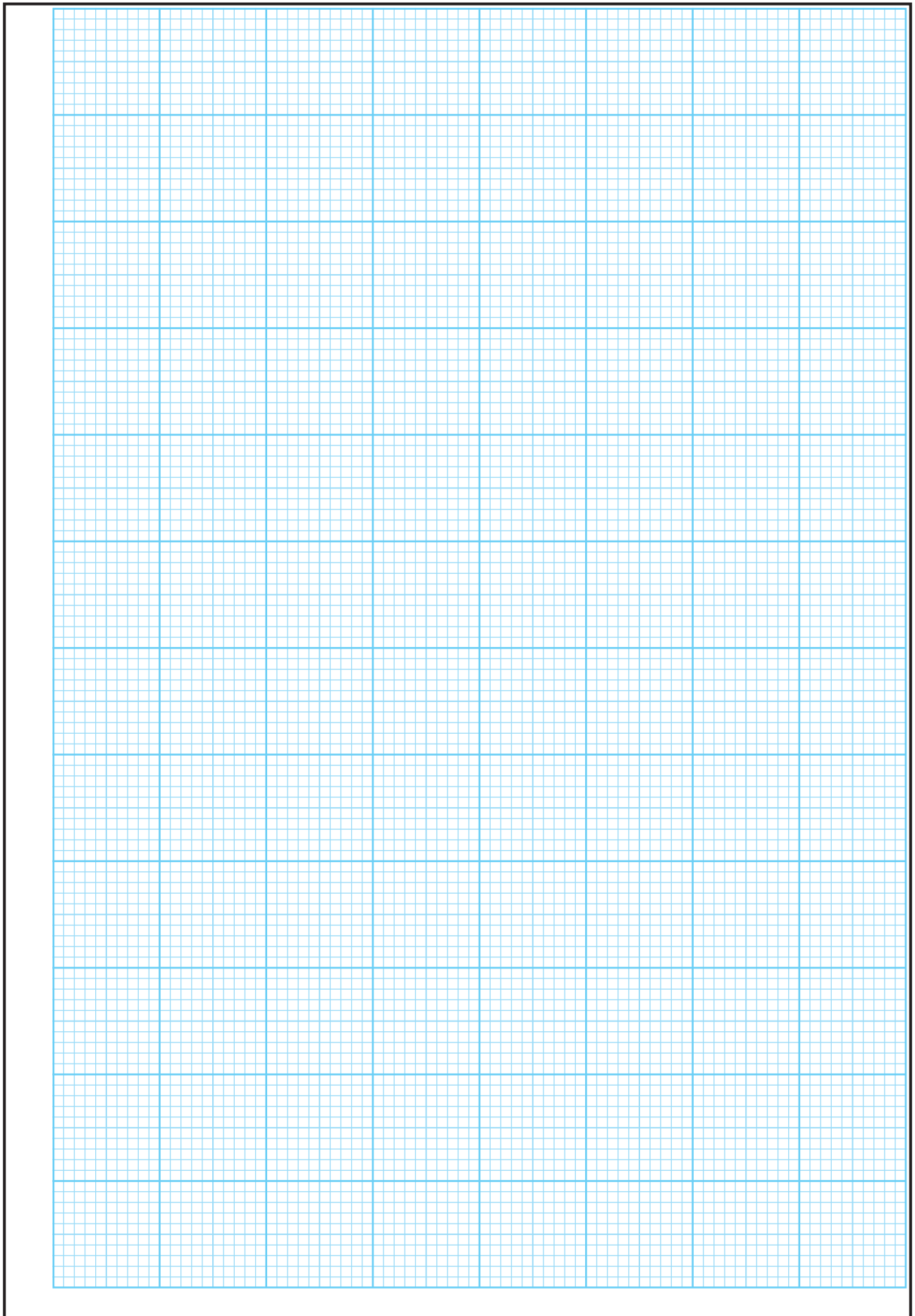
Four pages of graph paper are provided on the next four pages of this answerbook. On pages with graph paper, the box for the question number is at the bottom of the page.

You do not need to use all of the pages in this answerbook. If you run out of space in this answerbook, you may ask the superintendent for more paper or graph paper.

Write your answers in blue or black pen. You may use pencil for sketches, graphs and diagrams only.

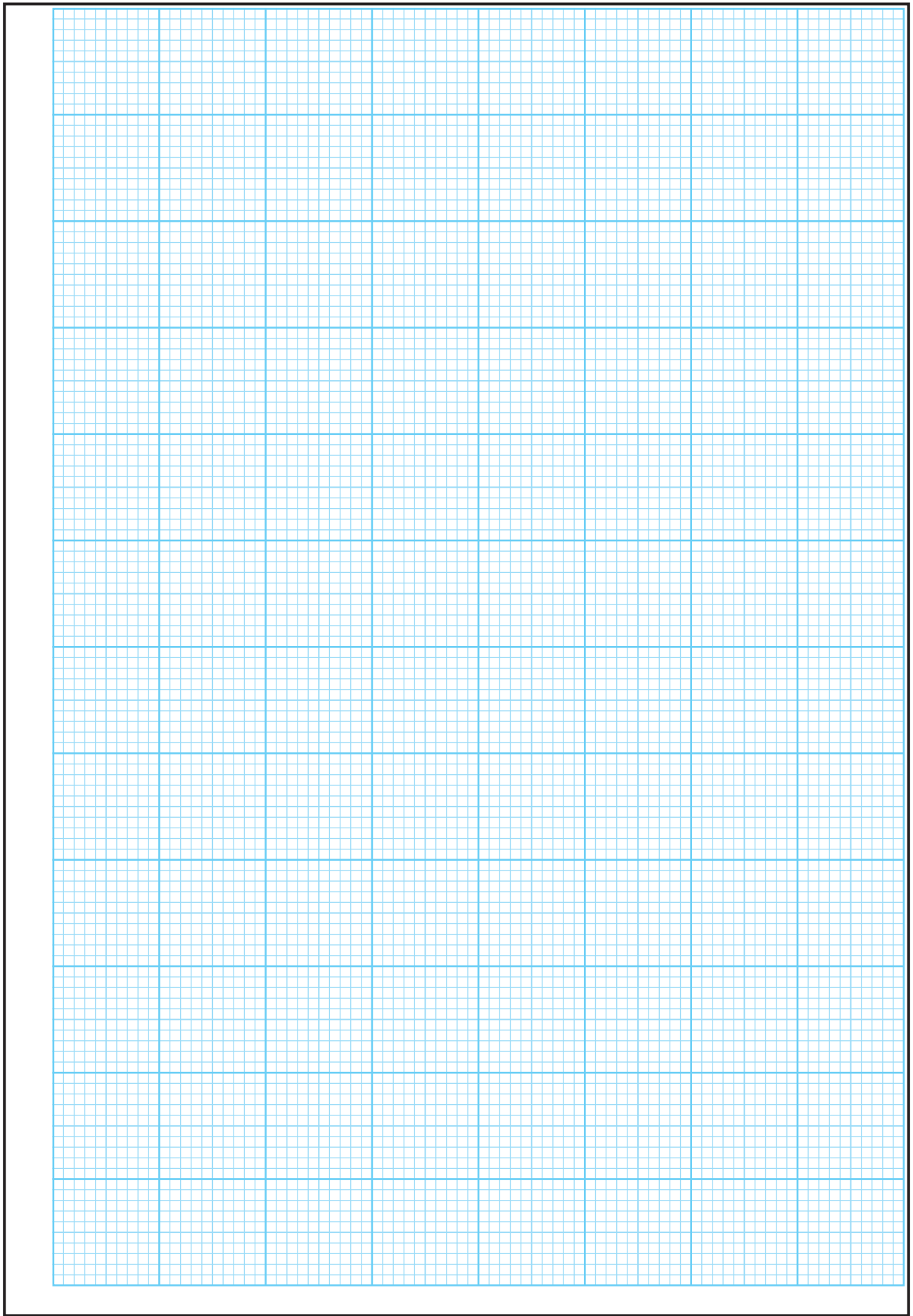


Question

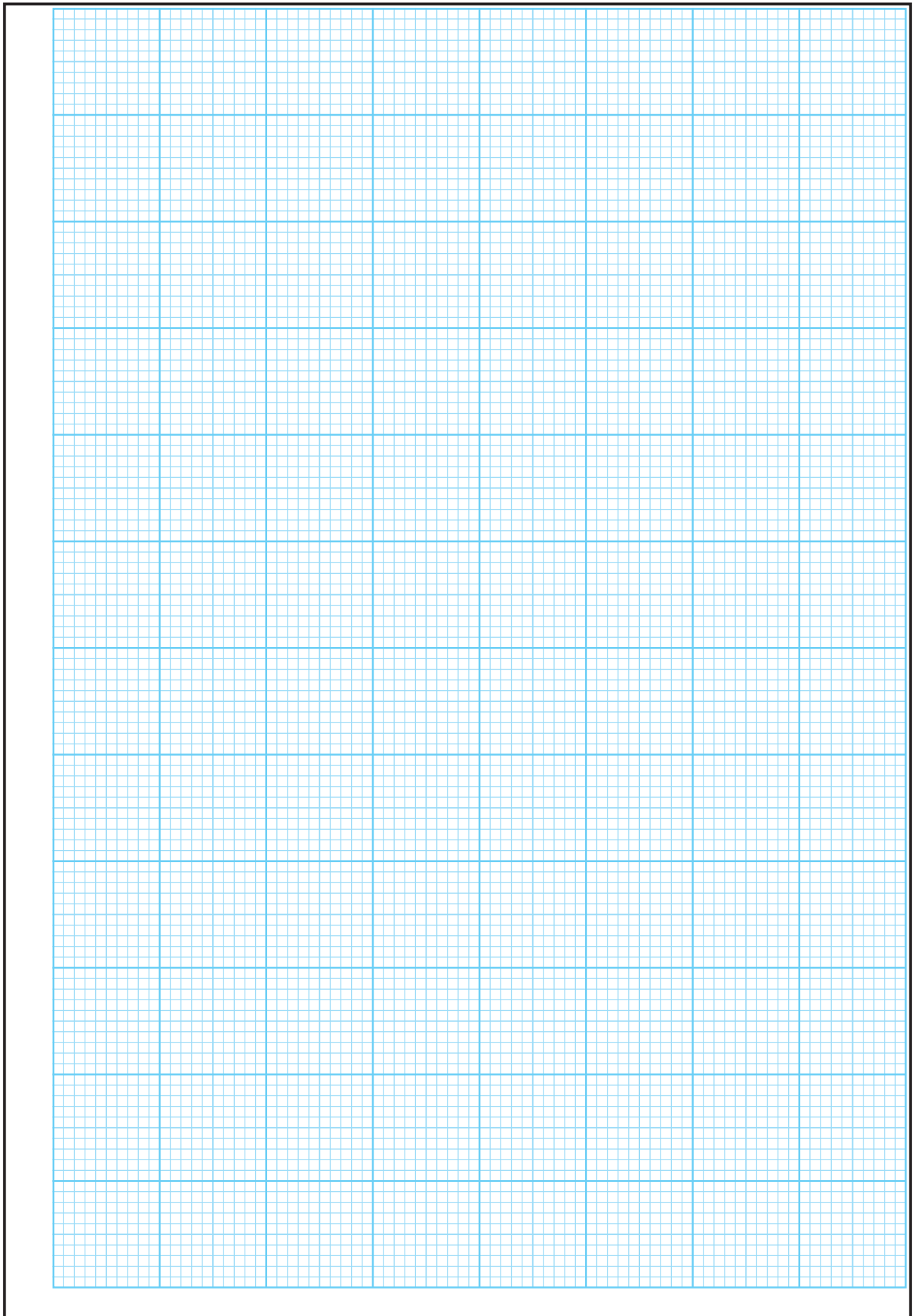


Question

--	--



Question



Question

☐☐

Part

[illegible]

--	--

Part

[illegible]

--	--

Part

[illegible]

Part

[illegible]

Part

[illegible]

--	--

Part

[illegible]

--	--

Part

[illegible]

Part

[illegible]

--	--

Part

[illegible]

--	--

Part

[illegible]

--	--

Part

[illegible]

--	--

Part

[illegible]

--	--

Part

[illegible]

--	--

Part

[illegible]

Part

[illegible]

--	--

Part

[illegible]

--	--

Part

[illegible]

Part

[illegible]

--	--

Part

[illegible]

--	--

Part

[illegible]

--	--

Part

[illegible]

--	--

Part

[illegible]

Part

[illegible]

Part

[illegible]

Part

[illegible]

Part

[illegible]

--	--

Part

[illegible]

--	--

Part

[illegible]

Part

[illegible]

Do not write on this page

Copyright notice

This examination paper may contain text or images for which the State Examinations Commission is not the copyright owner, and which may have been adapted, for the purpose of assessment, without the authors' prior consent. This examination paper has been prepared in accordance with *Section 53(5) of the Copyright and Related Rights Act, 2000*. Any subsequent use for a purpose other than the intended purpose is not authorised. The Commission does not accept liability for any infringement of third-party rights arising from unauthorised distribution or use of this examination paper.

Leaving Certificate – Higher Level

Geography Part One and Answerbook

Friday 9 June

Morning 9:30 - 12:20